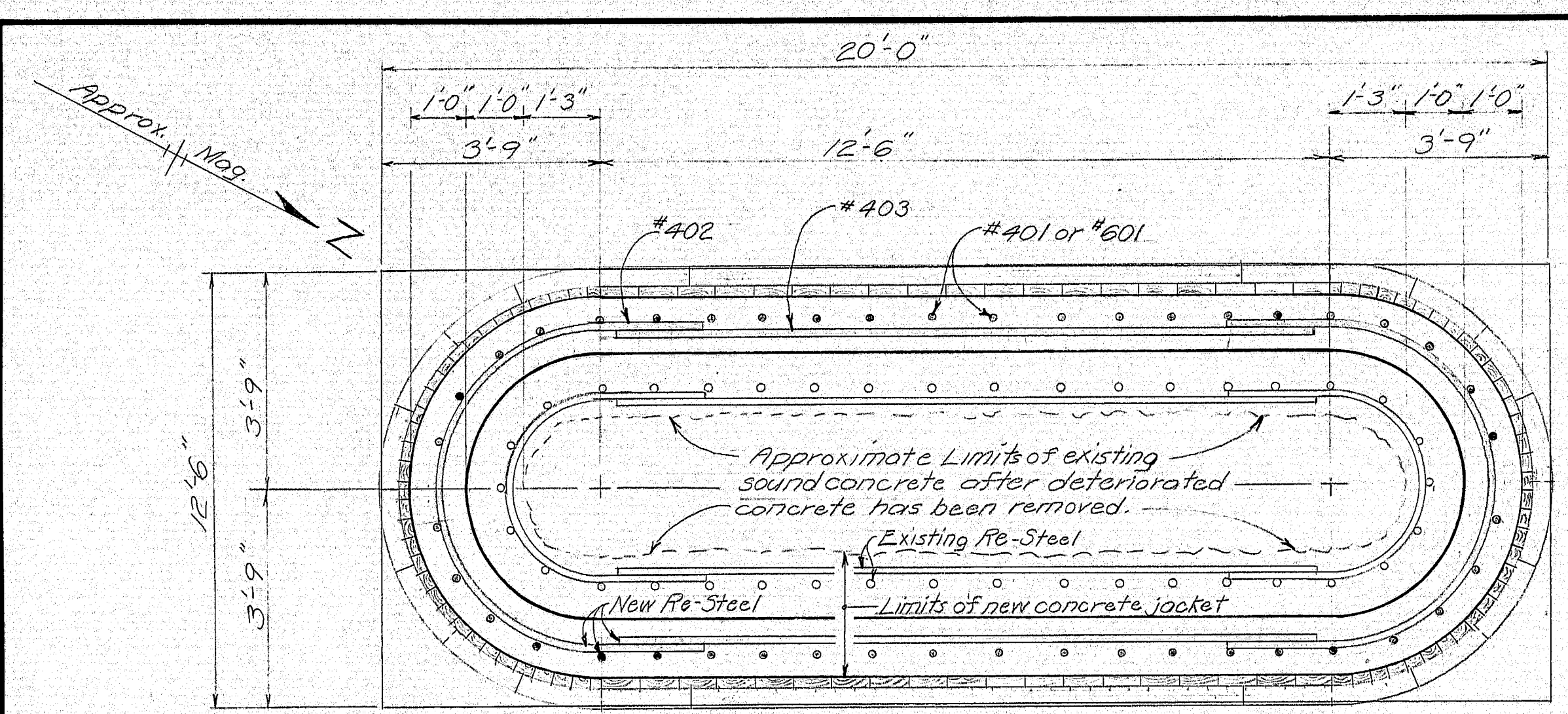
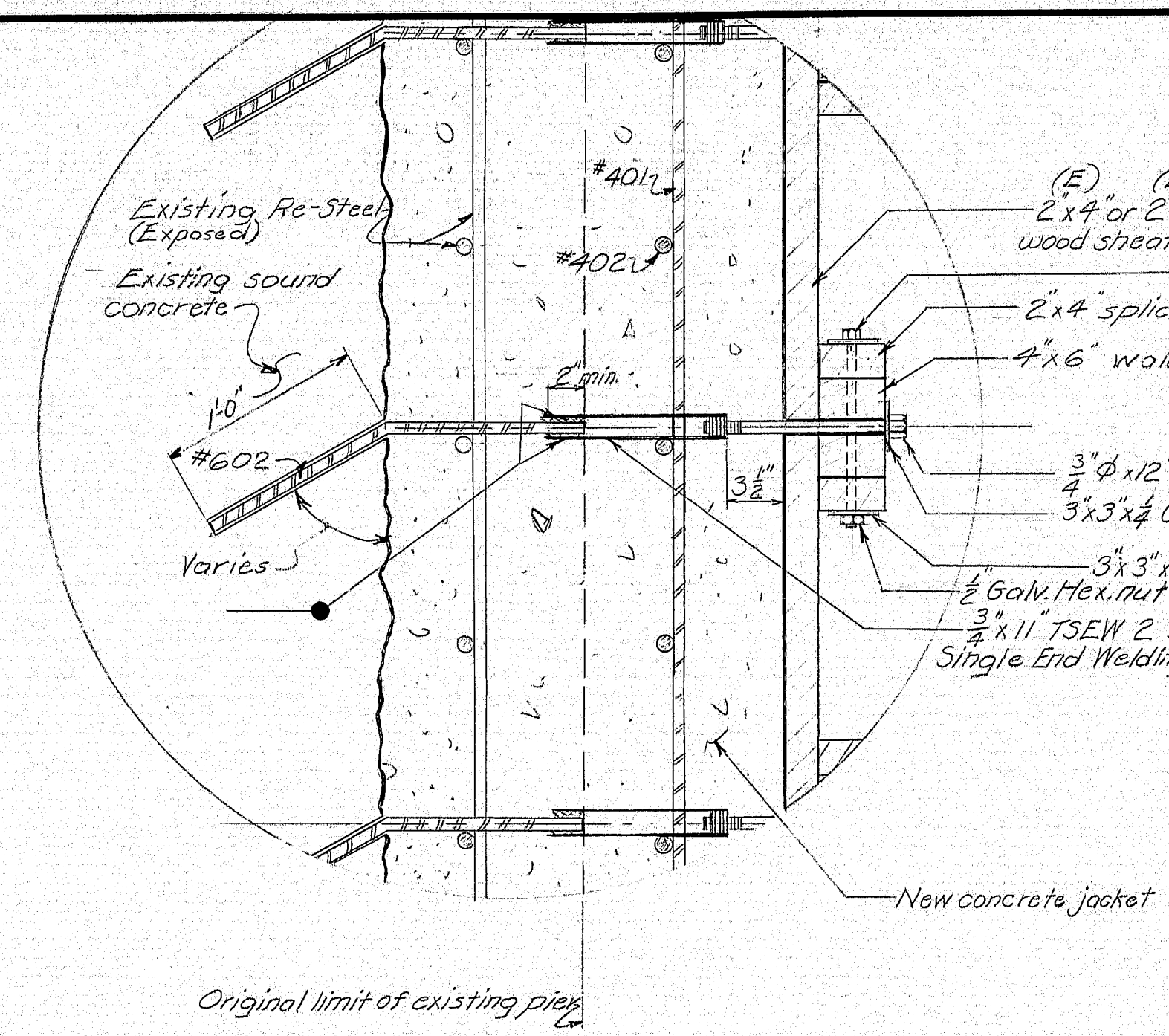


F.H.W.A. REG. NO.	STATE	PROJECT NUMBER	SHEET NO.	TOTAL SHEETS
1	MAINE			

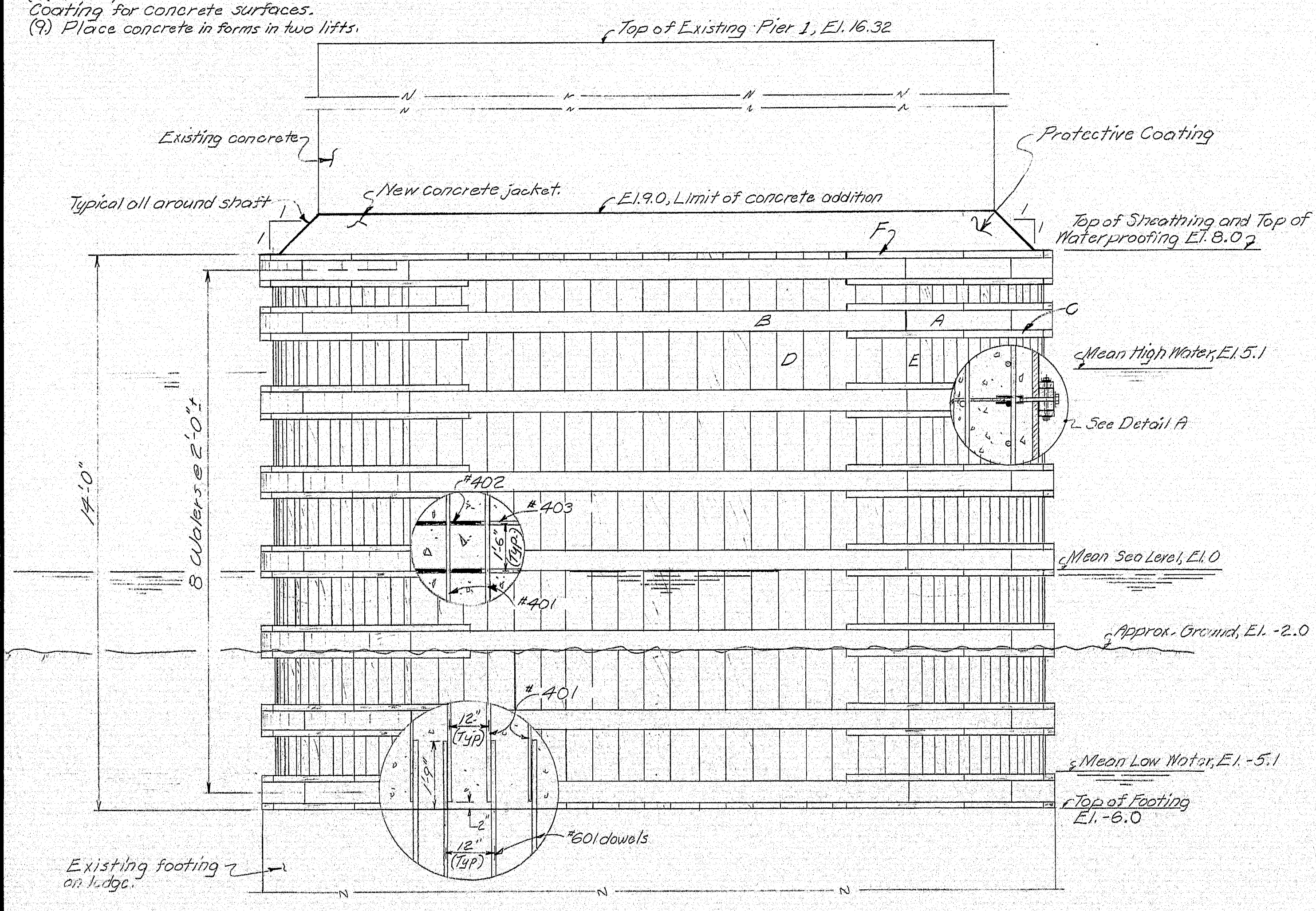
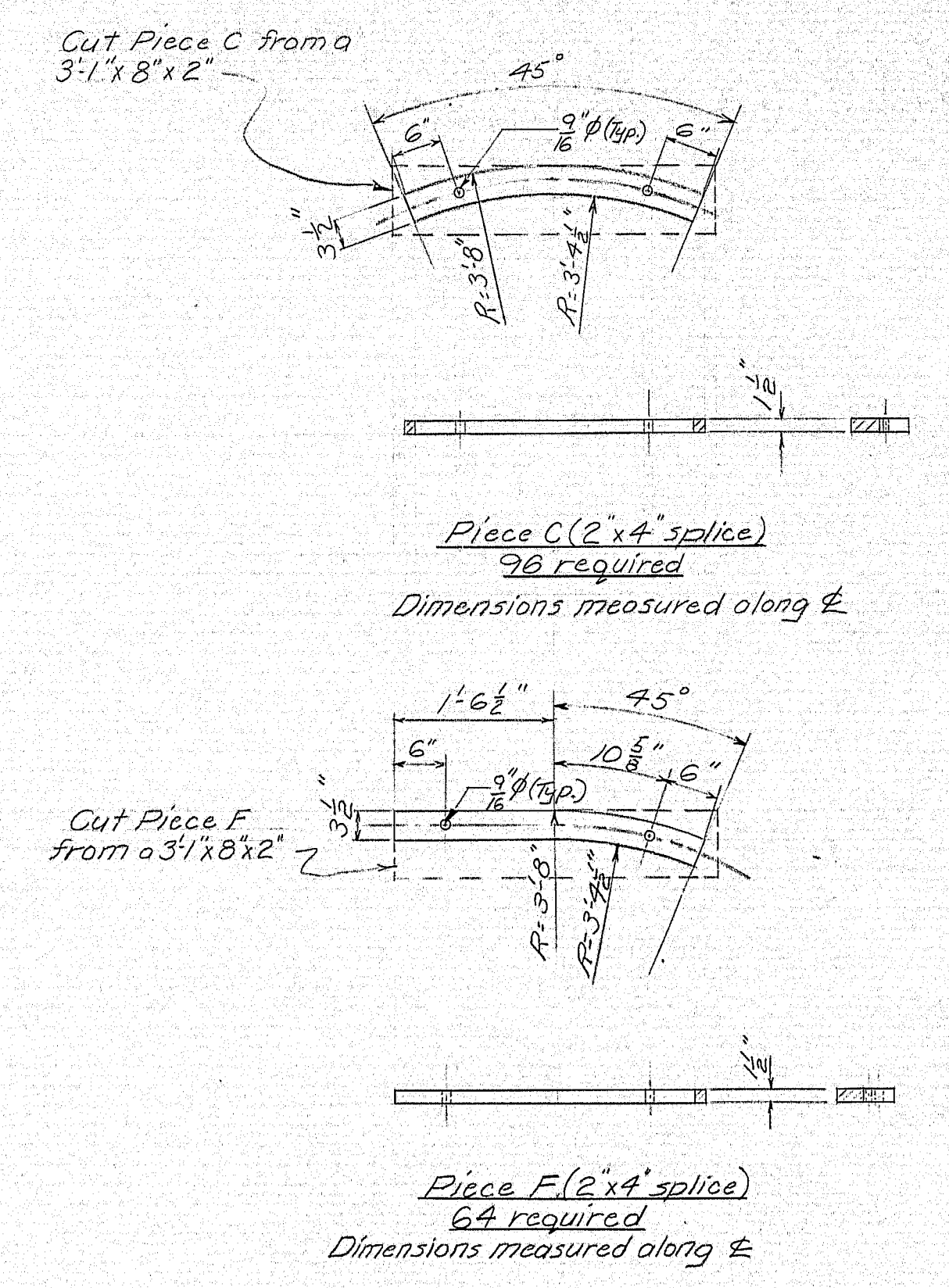


- GENERAL NOTES**
- (1) Reinforcing steel splices shall have a minimum length of 24 times the diameter of the smaller bar.
 - (2) Reinforcing steel shall be 6 inches clear.
 - (3) Dowels #602 shall be cut and bent in field.
 - (4) Drill holes for dowels #601 (see Elevation) and #602 (see Detail A) in existing concrete and grout in place with non-shrink grout.
 - (5) All lumber shall be treated with creosote preservative after all cutting and drilling holes are complete.
 - (6) Cut and trim lumber to fit in field.
 - (7) All concrete shall be Class A.
 - (8) All exposed new concrete shall be coated with Protective Coating for concrete surfaces.
 - (9) Place concrete in forms in two lifts.

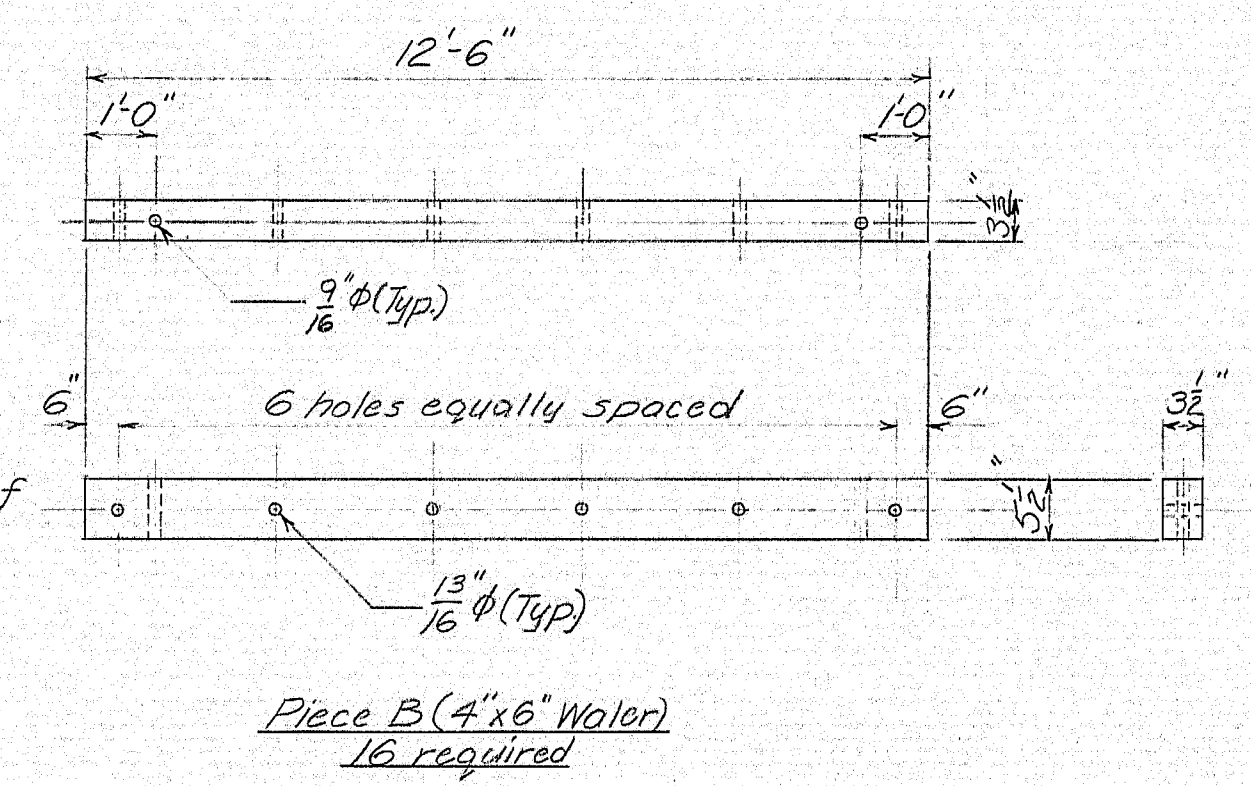
PLAN
(Pier 1)



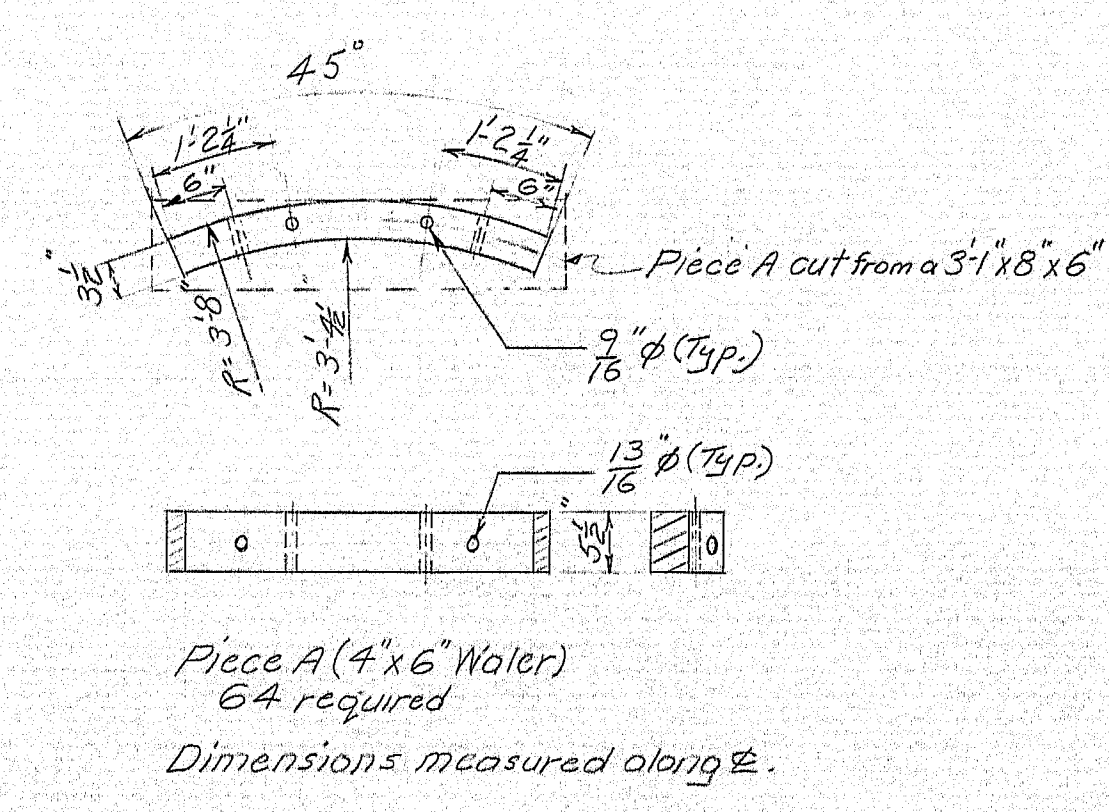
DETAIL A



ELEVATION (Pier 1)



Piece B (4' x 6' Water)
16 required



Piece A (4' x 6' Water)
64 required
Dimensions measured along L.

REINFORCING STEEL SCHEDULE				
Mark	Size	No.	Length	Remarks
401	4	44	14'-0"	Vertical - Concrete Jacket
402	4	22	11'-11"	Horizontal - Hoop bar, Concrete Jacket
403	4	22	12'-0"	" " " " " "
601	6	44	3'-6"	Dowels, Footing - Shaft (Conc. Jacket)
602	6	12	40'-0"	2'-0" Dowels to be cut in field - Form anchors.

All dimension to Out to Out of bar. Steel to be Grade 40 or Grade 60.
Estimated Volume of Concrete for jacket = 41 yd³
Estimated Re-Steel weight = 1,720 lbs
(Area covered by Protective Coating = 6 yd².)

Hardware Schedule	
250- $\frac{3}{4}$ " ϕ 12" UNC 10 Galv. bolt	
250- $\frac{3}{4}$ " ϕ 3" Galv. washer for $\frac{3}{4}$ " ϕ bolt	
250- $\frac{3}{4}$ " 11" TSEW 2 strut Single End Welding Tyscrus, with $\frac{3}{4}$ " ϕ Unthreaded	
200- $\frac{3}{4}$ " ϕ 12" UNC 13 Galv. bolt	
200- $\frac{3}{4}$ " ϕ Galv. nut	
400-3' x 3' x $\frac{1}{2}$ " Galv. washer for $\frac{1}{2}$ " ϕ bolt	

STATE OF MAINE
DEPARTMENT OF TRANSPORTATION
DEER ISLE - SEDWICK BRIDGE
DEER ISLE - SEDWICK
No. 3257
PIER 1 REPAIR TO SHAFT
SHEET 1 OF 1 AUGUSTA, MAINE Jan. 1975

DESIGN - DETAILED	CHECKED	REVISIONS	FIELD CHANGES
BY	DATE		
BY	DATE		
BY	DATE		